

Multi-Function Card

R56S

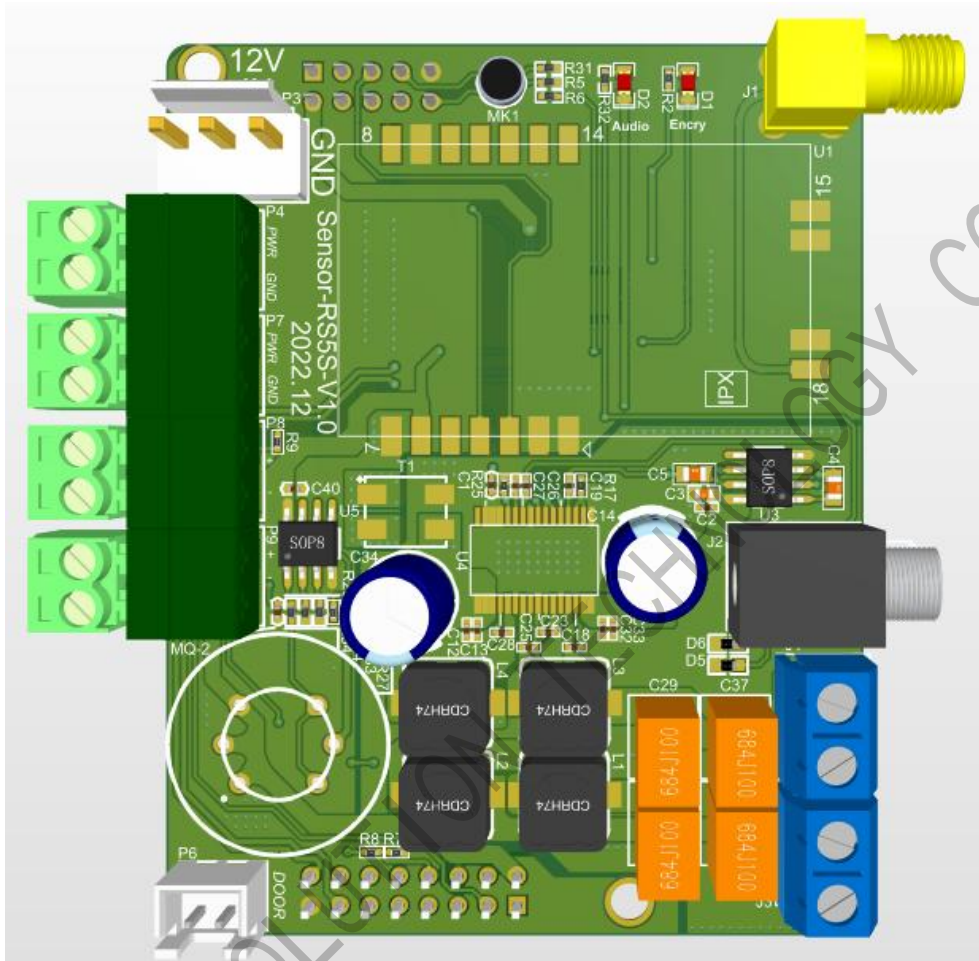
Specification Product

Update Record

No.	Version	Update	Revise
1	Ver.1.0	Initial	2023.01.29
2	Ver.1.1	Updating content	2024.05.27

The document is subject to change without prior notice.

Product Image



SHENZHEN SYSOL SYSTEM CO., LTD

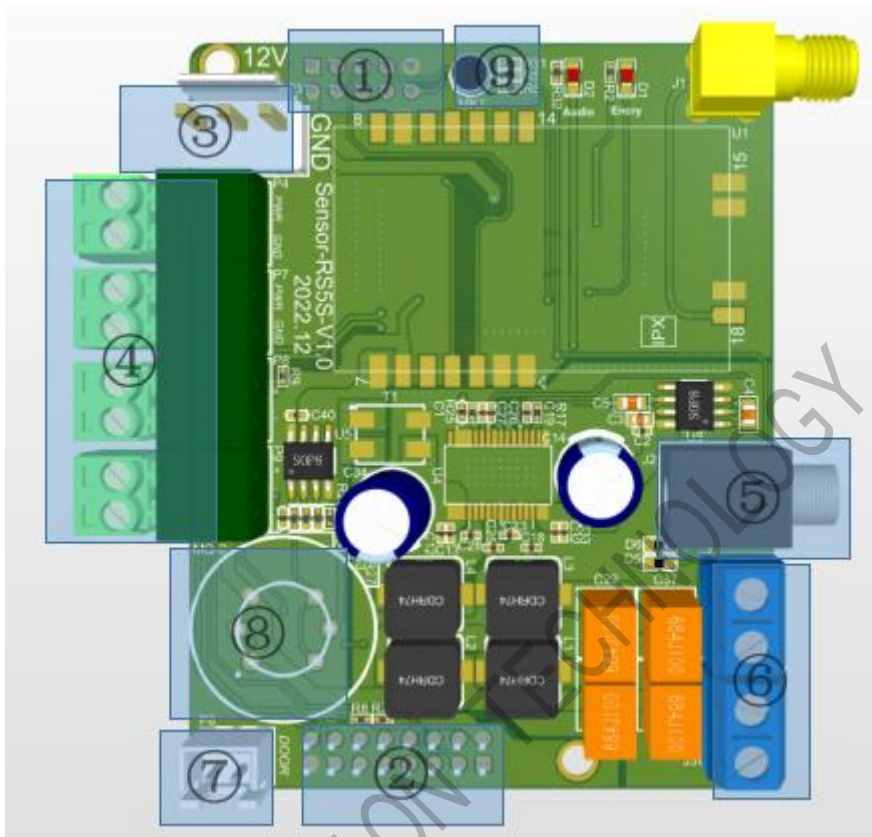
Features

Multiple function board R56S has following features:

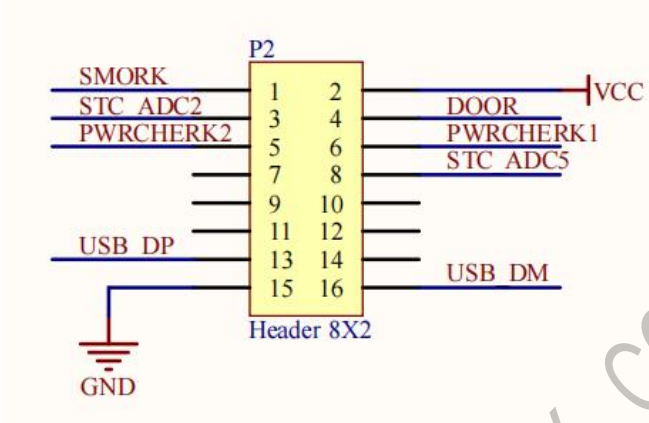
1. Run indicator: checking the sensor working normal or not;
2. Work together with Sysolution Y50 controller
3. Maximum support 4 ways of power voltage measurements.
4. Standard smoke, door open/close sensors interfaces

SHENZHEN SYSOLUTION TECHNOLOGY CO., LTD

Interface Definition



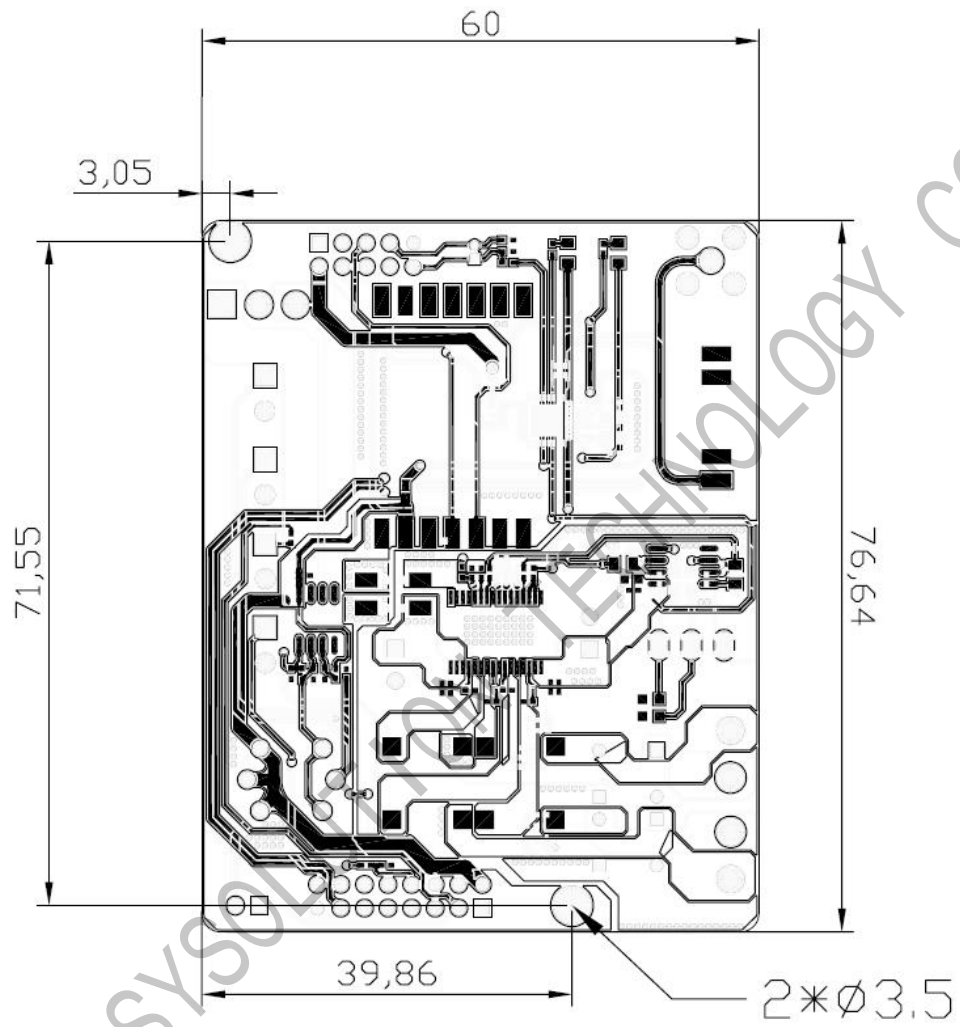
Description	
No.	Type
①	<p>10PIN interface: Microphone</p>

②	<p>16PIN interface: connecting smoke, ADC measure, door open/close, USB</p>  <p>The diagram shows a 16-pin header labeled P2. The pins are numbered 1 through 16. Connections are as follows: Pin 1 to SMORK; Pin 3 to STC ADC2; Pin 5 to PWRCHERK2; Pin 7 is unconnected; Pin 9 is unconnected; Pin 11 to USB DP; Pin 13 to GND; Pin 15 is unconnected. On the right side: Pin 2 is unconnected; Pin 4 to DOOR; Pin 6 to PWRCHERK1; Pin 8 to STC ADC5; Pin 10 is unconnected; Pin 12 is unconnected; Pin 14 to USB DM; Pin 16 is unconnected. A VCC symbol is shown connected to the DOOR line.</p>
③	Power interface: 12V power supply
④	4 ways of power voltage measurement
⑤	3.5mm audio input
⑥	Amplifier audio output port
⑦	Door open / close sensor interface
⑧	smoke modem
⑨	microphone

Specifications

Product name &Type	Parameters
Multiple function board R56S	<ol style="list-style-type: none">1. The radius of synchronous radiation is 2KM (the distance affected by the actual use environment may have deviation);2. Reserved interfaces for smoke, door opening and closing detection, and power voltage detection;3. Work with the Y50 sending card, there is no need for additional holes for fixation.

Dimensions



unit: mm

Note

1. Pay attention to water resistance.
2. It is strictly prohibited to plug and remove the connecting cable while the line is live.
3. Do not touch the AC220V terminal of the relay.
4. Do not touch the chips and pins on the product to avoid electrostatic damage.

SHENZHEN SYSOLUTION TECHNOLOGY CO., LTD